

Down on the Farm, Up at the Lake:

How to blend a farmhouse style with a laid-back Lake Country vibe

WRITTEN BY CARA LANZ

IF YOU'VE SUDDENLY FOUND YOURSELF EYEING UP GRAIN SILOS FOR THEIR DESIGN AESTHETIC, you're not alone. Thanks to powerhouse HGTV couple, Chip and Joanna Gaines, the Fixer Upper effect is stronger than Chip with a sledgehammer on demo day. And as a result, it seems we all want to incorporate the Gaines' famous farmhouse look into our own homes. Lucky for us, here in cabin country, the modern farmhouse look is a natural fit with our casual, laid-back lakes vibe.

For a little inspiration, interior designers share their tips to help you work the fresh farmhouse feeling into your cozy cabin or lake home.

Repurposed pieces

Gwen Torfin, interior designer at The Hearth Room, in Brainerd, Minnesota, says, "The more eclectic someone is, the more they can have the farmhouse look, like Joanna Gaines. She brings in old, antique pieces and refurbishes them for a modern twist." She encourages folks to look for little treasures to use in a unique way, like old pails and buckets for umbrella stands or garbage cans, putting a cushion on an old cart for an ottoman, or adding old doorknobs to a piece of wood for coat hooks.



Wrought iron

Wrought iron is an essential element in modern farmhouse design and black accents, from hardware to faucets, can help you achieve this iconic style in your home. Use black wrought iron for drapery rods with fun textured fabric window treatments, as a replacement for wood railings, or on a headboard in your bedroom. You can also add touches throughout your home with iron accessory pieces like old clocks, metal letters, or baskets.

Natural elements

Farmhouse and lake country styles are both deeply rooted in nature, which makes Joni George, owner at Joni George Interiors, Edina, Minnesota, think of casual-looking pieces that are textural, like wicker. She suggests incorporating wicker chairs into your living room or using wicker accent pieces, like trays.

Danae Blanck Anderson, owner and interior designer at I.D. Your World, Brainerd, Minnesota, says, "Adding natural wood elements like custom or antique corbels in your entry way, above your stove, or in doorways is an easy way to incorporate the farmhouse look."

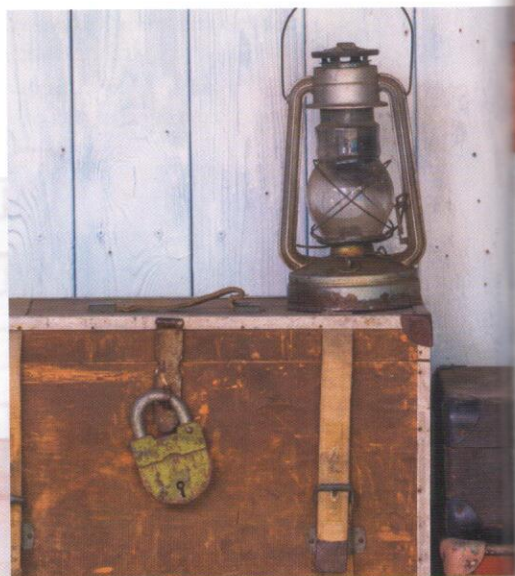


Open shelving

George likes the functionality of open shelving, especially as it relates to cabins in Lake Country. "It says, 'This is what we have, this is what we use.' It's fun and clean and lends itself to ease of grabbing off the shelf to put a sandwich together. If you have tons of dishes, maybe you do open shelving in a walk-in pantry where you can have fun with displaying your mixing bowls," she says.

Shiplap

Shiplap may seem like a signature Chip-and-Joanna move, but here in Lake Country, we've been doing our own version of it for years—we just called it tongue-and-groove. Anderson's tip is to use it on an accent wall in a bedroom or even in your entry way to set the tone. Torfin suggests installing shiplap to the front side of a kitchen island. Whitewash will help preserve the natural beauty of the woodgrain while also giving it a fresh, lightened up farmhouse feeling.



Cultivate Your Curb Appeal

Our experts share their tips for creating a farmhouse-fresh curb appeal:

“Your entryway tells you what to expect inside. Lanterns on your front porch and a floral wreath on your door add a welcoming first glance,” George says.

Anderson suggests adding aged-looking planters with mixes of tall ornamental grasses and pretty, native florals, like ones you would find in a Minnesota field.

Torfin likes to bring color into curb appeal with fun accent benches in red or green, then softening the look with flowers or greenery. “Putting a trellis over the top of the door is also a great way to distinguish your entryway,” she adds. 